

FOSTER CARE OVERVIEW STRUCTURE PART 1

DEPUTY SECRETARY TANYA KEYS

HOUSE HEALTH AND HUMAN SERVICES COMMITTEE | FEBRUARY 2, 2022

TABLE OF CONTENTS



3 | Organizational structure

5 | Intersections

6 | Duties

8 | Decisions

9 | Foster Care Provider Services

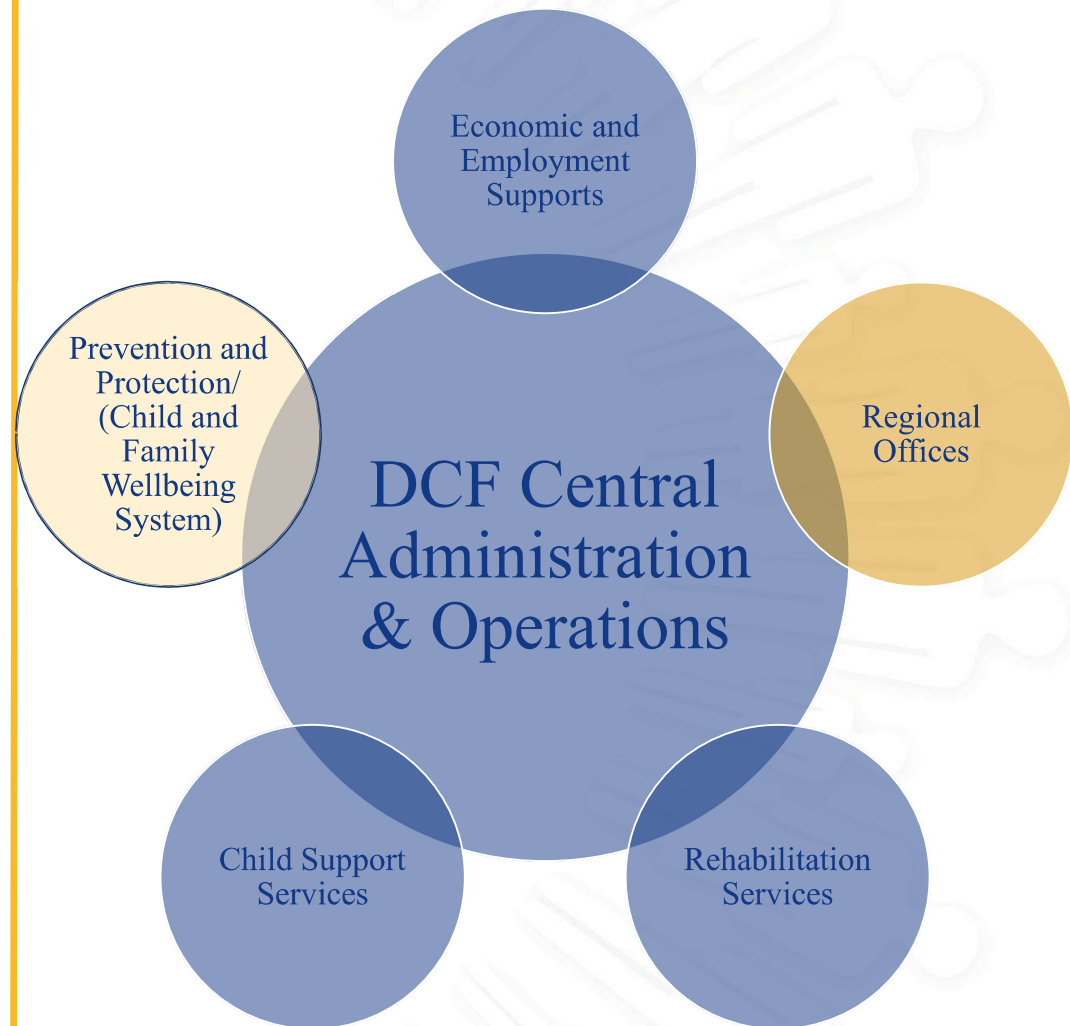
10 | Maps

15 | Trend Data

19 | Collaboration Pathways

SETTING THE CONTEXT: DCF MAJOR PROGRAMS

- Programs collaborate for family and individual outcome achievement
- Programs are supported by core operations.
- Program and practice are carried out by teams in 36 service centers across 6 Regional Offices



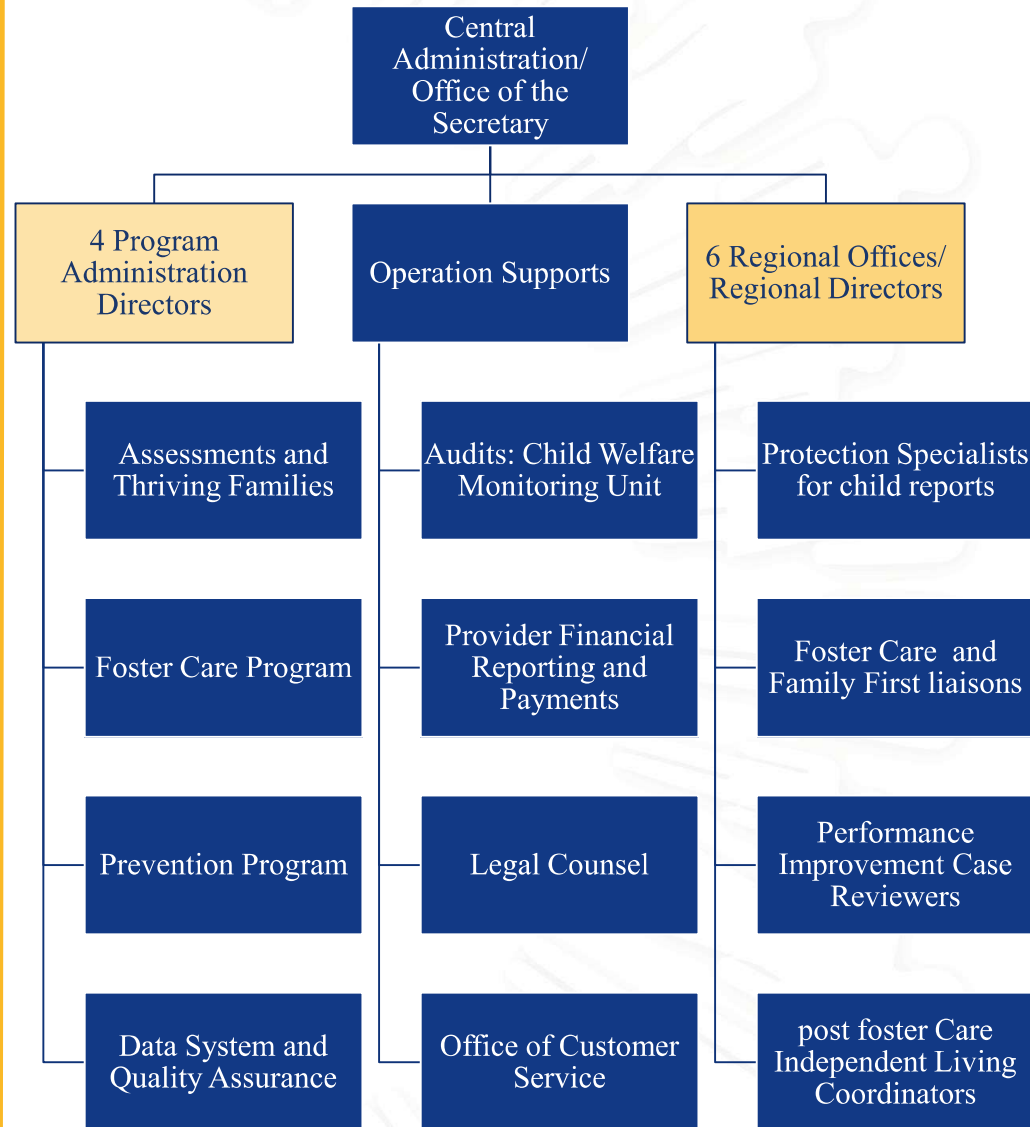
DETAIL: CHILD & FAMILY WELL-BEING ORG

- Within Prevention and Protection Services organized programs

- Program administration
 - policy development
 - grant and contract administration
 - federal reporting
 - performance improvement plans



- Regions
 - manage teams carrying out field work direct services
 - contract or grant monitoring
 - DCF information system data entry
 - performance improvement case reads



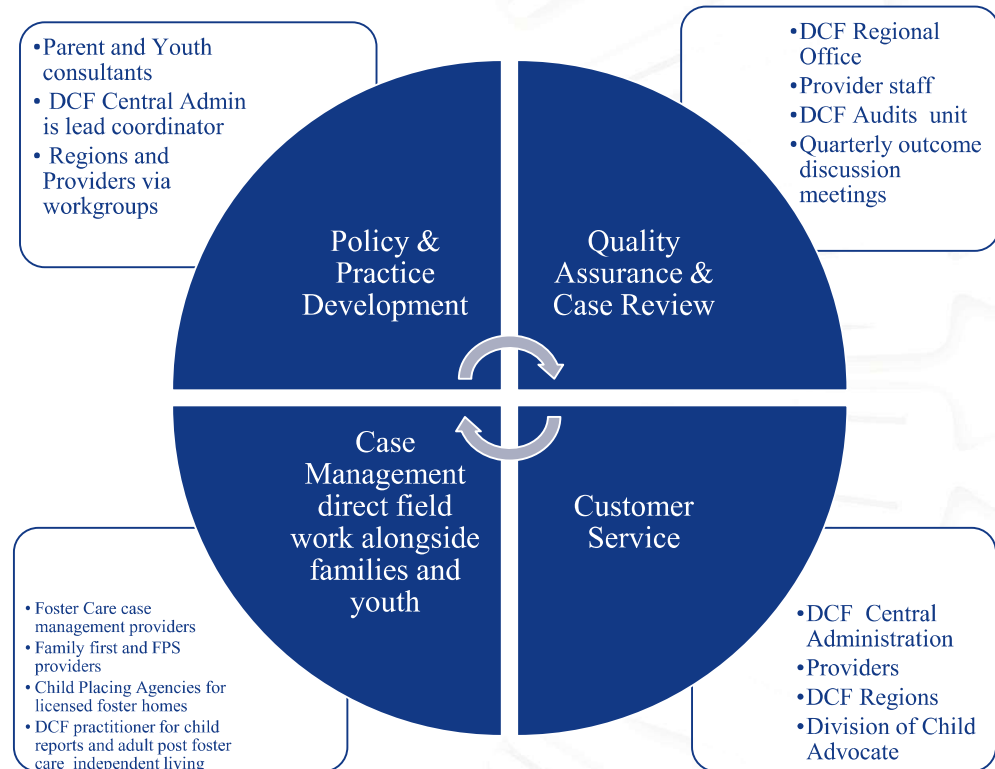
DETAIL: DCF AND PROVIDER INTERSECTIONS

- Local case management agencies:
 - Receive referral from DCF
 - Engage field work alongside families
 - Perform case reviews independently or jointly with DCF
 - Resolve concerns locally at lowest level possible before elevating for assistance

Day to Day Management:

Regional Director ⇔ Case Management Agency Program President

Regional FC Liaison Manager ⇔ Case Management Agency Catchment Manager



QA DUTIES & COLLABORATIONS 1



Central Administration

- Quarterly outcome review meetings, support Program Improvement Plans
- Review & monitor customer service tickets
- Monitor and reconcile data quality
- Review quarterly grantee reports
- Coordinate Case Reviews (federal CFSR or targeted / focused reviews)
- Review financial reports monthly
- Conduct audits on administrative requirements of the grant
- Participate in family or child level service problem solving
- Coordinate resources for practice model trainings
- On site technical assistance as needed

Region General Support

- Identify relative resources and bridge information for first case plan
- Facilitate regular meetings with providers and court
- Support resolution of customer service tickets
- Convene or facilitate stakeholder collaborative meetings
- Some support for team decision making facilitation
- Share training opportunities
- Support and monitor performance improvement plans
- Bridge services for families reunified for after care not released from custody
- Reviewers in formal case reviews (federal CFSR, etc.)

QA DUTIES & COLLABORATIONS 2



Region Foster Care Liaison

- Attend Best Interest Decisions regarding same school attendance
- Attend Placement Stability Team Decision Making Mtgs.
- Attend court hearings in some judicial districts
- Review and reconcile data quality
- Attending multidisciplinary complex case staffing
- Monitor due dates for court reports and case plans to ensure timely completion
- Monitoring Case Plan completion
- Review, edit, correct case plans
- Participating in staffing's for focus on specific populations: adoption cases, children/youth on run status, high acuity staffing's, children who experience a failure to place.
- Assist with court order journal entry receipt processing and adoption consents

Decision	Authority/ Responsibility	Collaboration
DCF prevention or community-based service	DCF, school, community agency or a family may self refer	During the DCF assessment, discussion occurs with the family and their network
Removal into foster care	Law enforcement or Court	DCF convenes a team decision making meeting to discuss safest decision for child
Case plan goal	Foster care provider	Through team and family meetings
Placement decision	Foster care provider	Through a team decision making meeting. Notice of planned move required. Court approval may be required. (e.g. Qualified Residential Treatment Provider or other)
Same school attendance	School and foster care provider	School of origin and case management provider meet for a best interest decision about same school attendance
Reintegration (permanency)	Foster care provider	Through team and family meetings and notice to court.

FOSTER CARE PROVIDER SERVICES



Wellness

- Screenings and assessments
- Service referrals
- coordination with MCO



Alongside family

- Facilitate family meetings
- Arrange parenting time
- Parent skill building



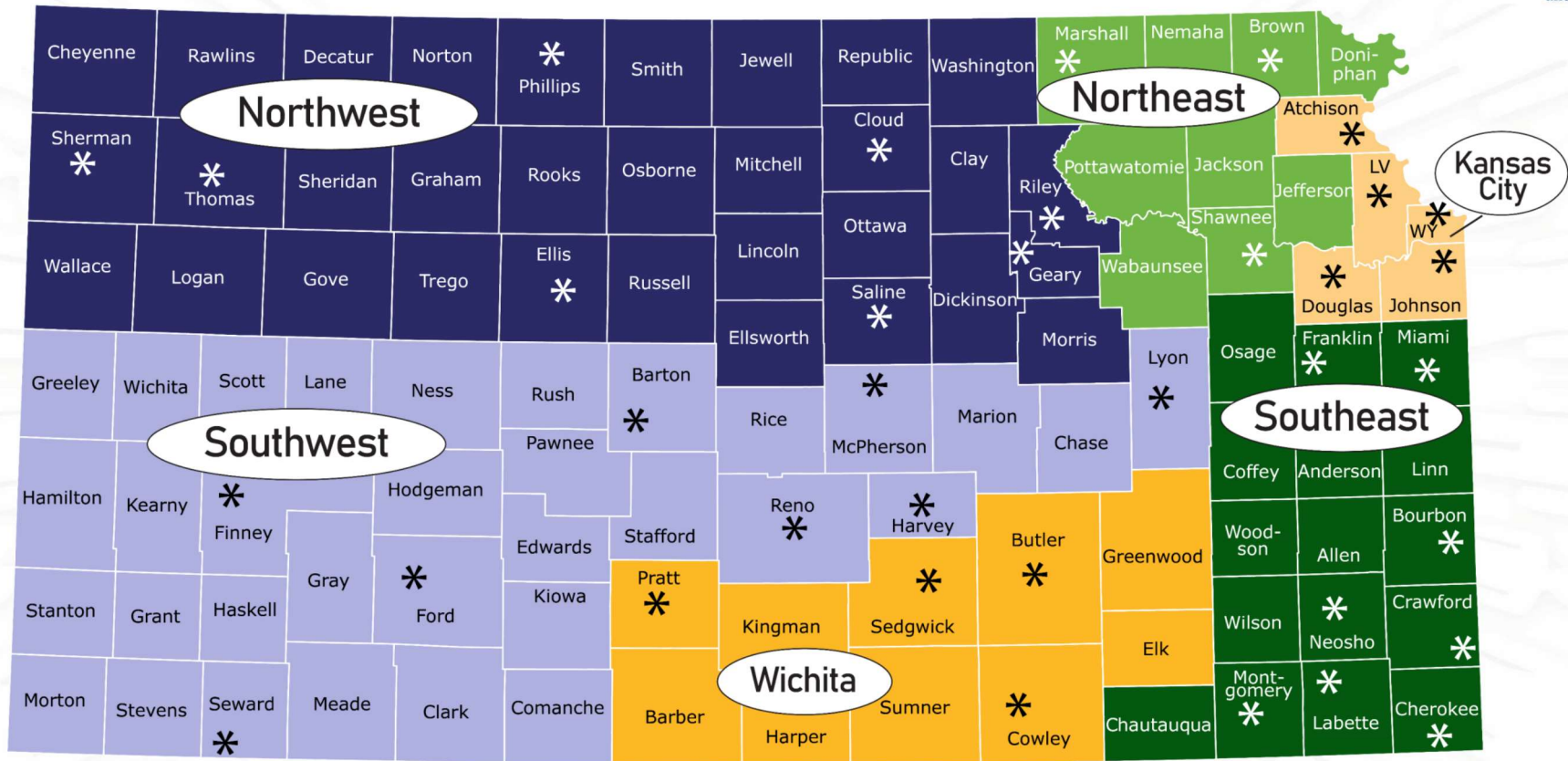
Case Management

- case plan development
- Placement stability support
- monthly worker/child interactions
- court reports

MAPS

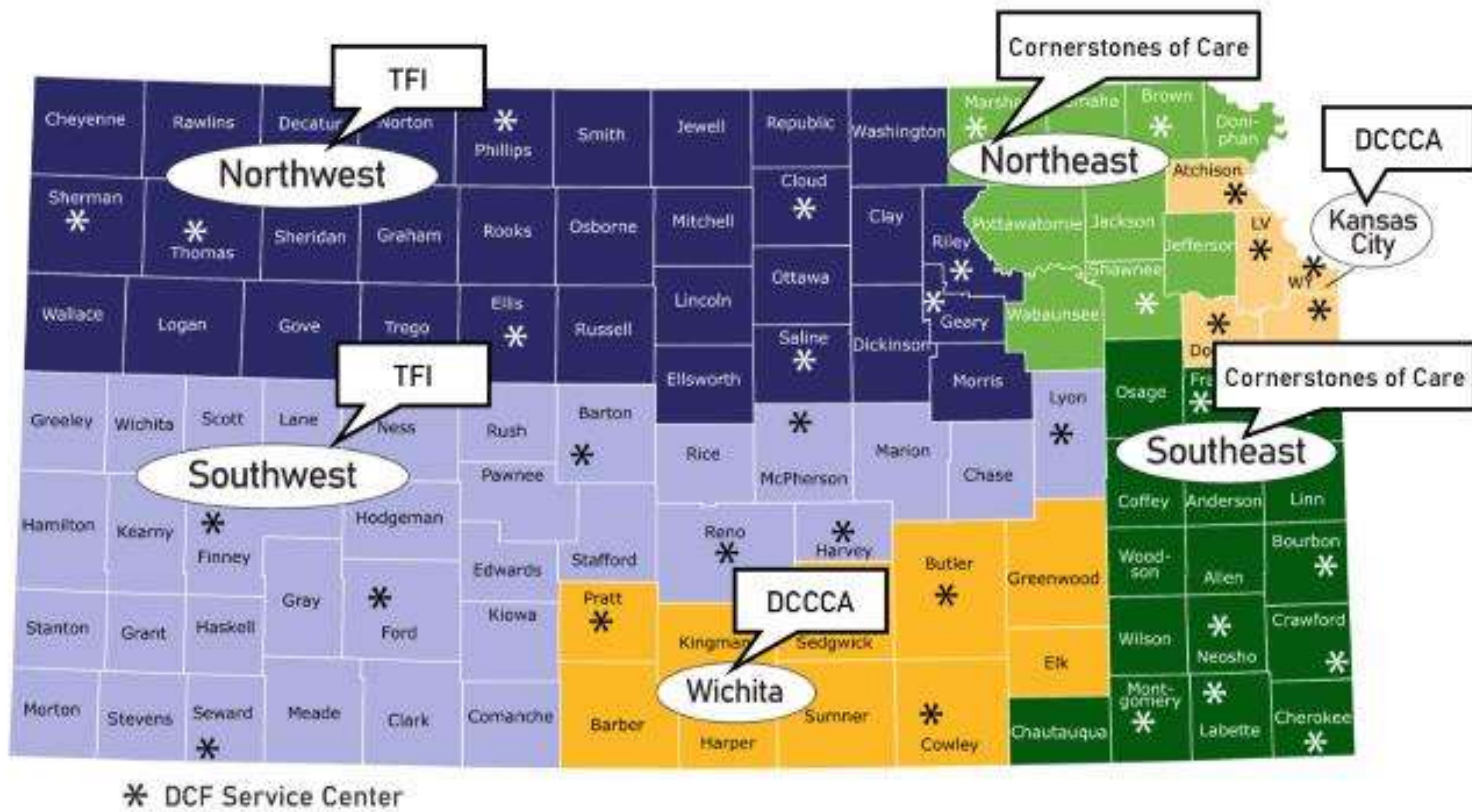
DCF, FOSTER CARE, FAMILY FIRST AND FPS

DCF Regions

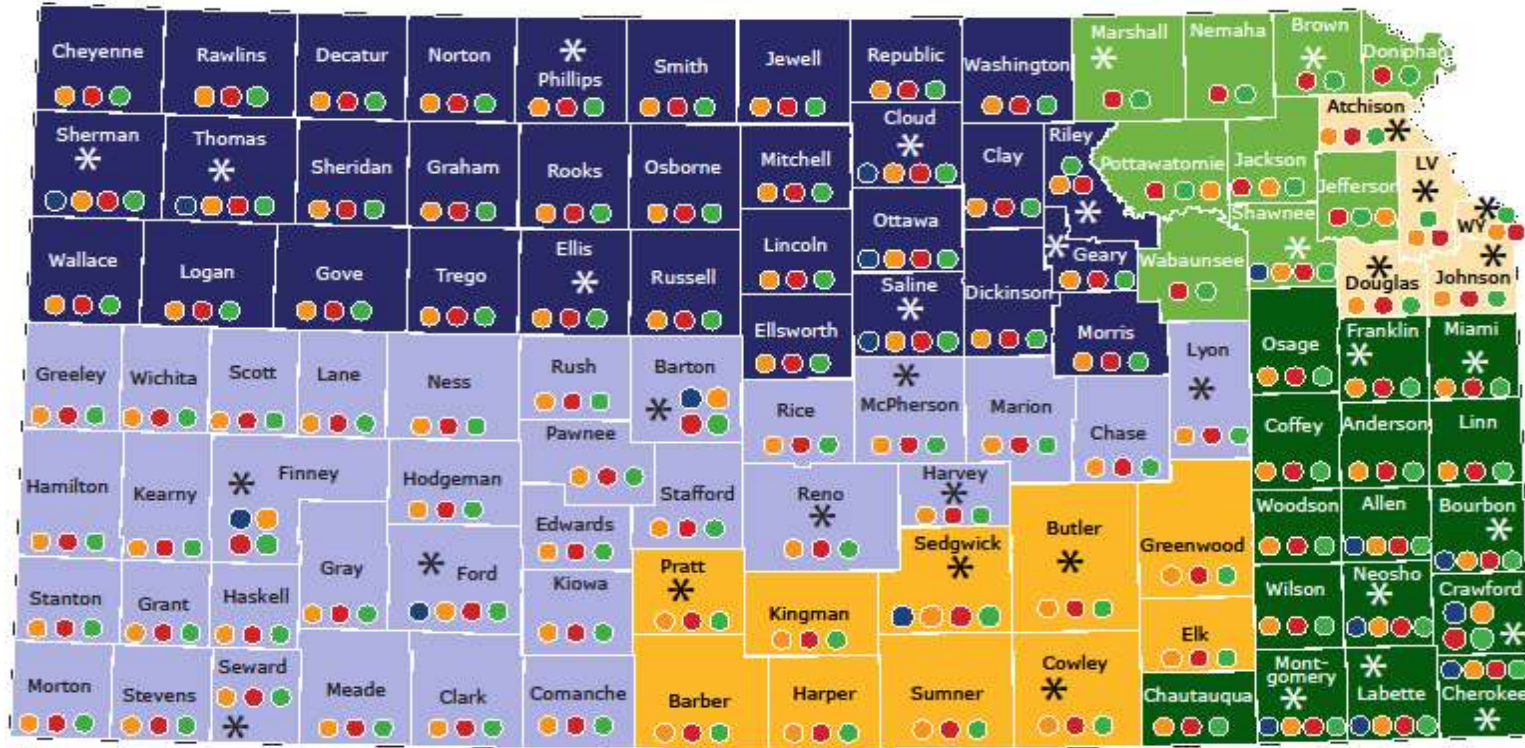


* DCF Service Center

Family Preservation in DCF Regions



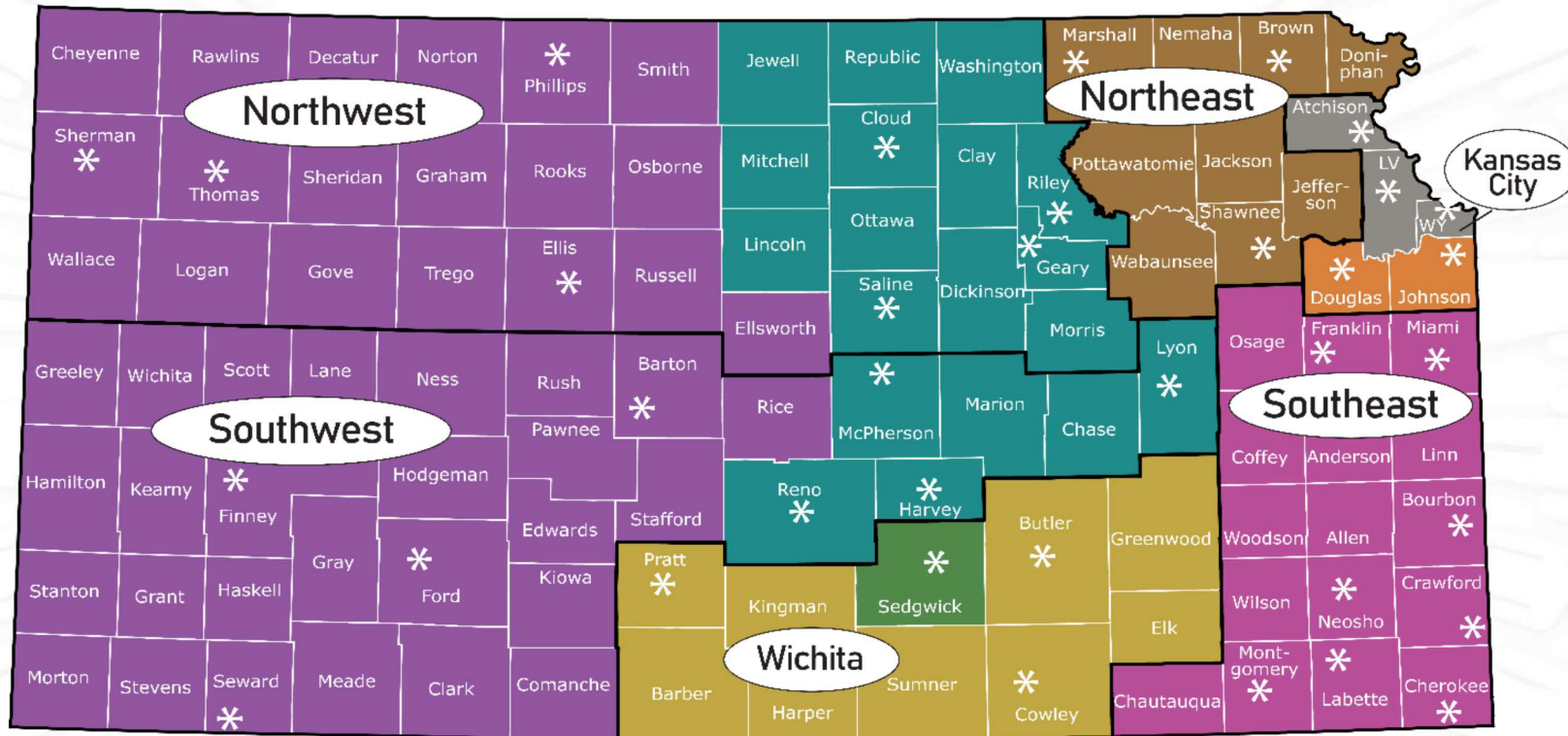
Family First Prevention Services Act Programs



* DCF Service Center



DCF Regions & Catchment Areas

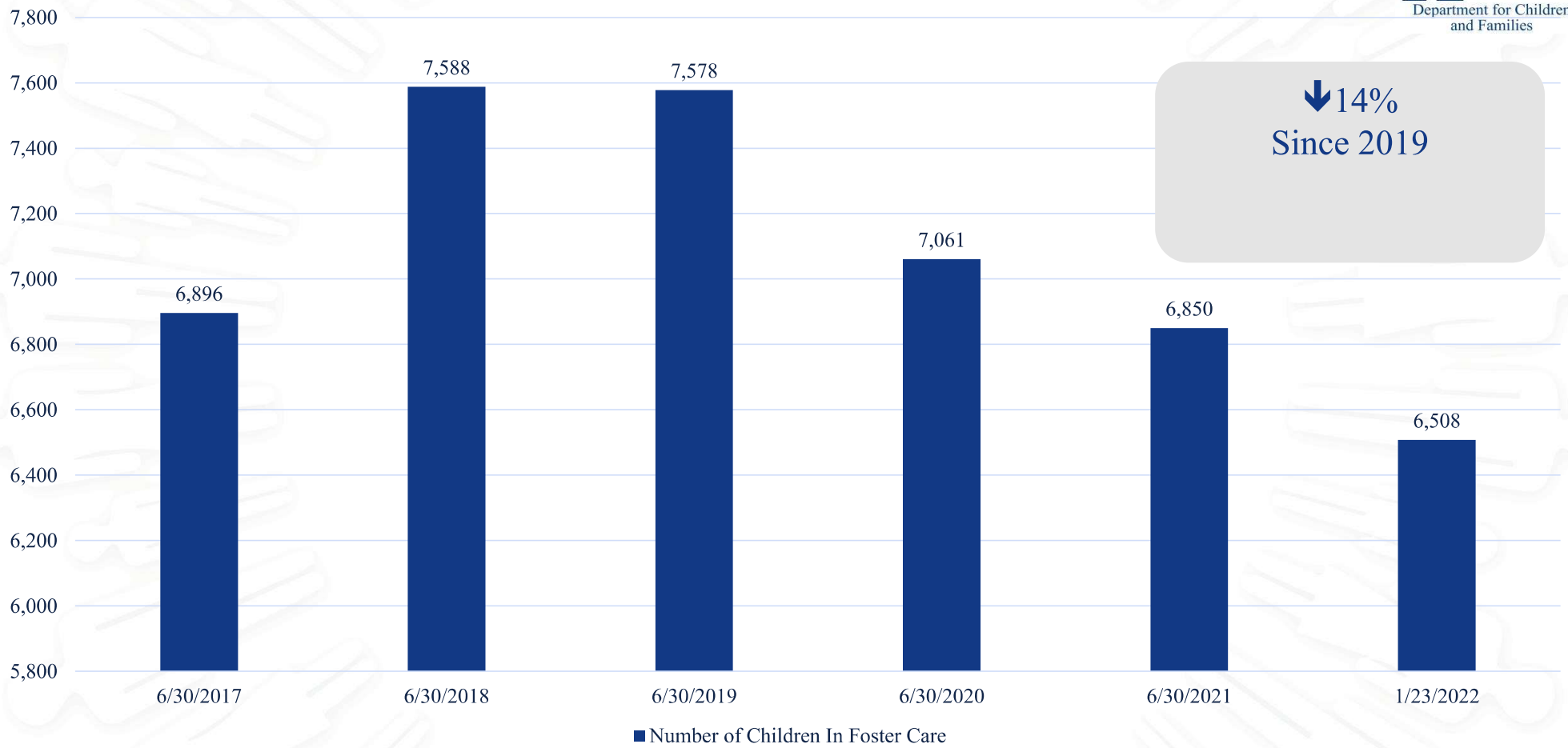


- * DCF Service Center**
- AREA #1**
Saint Francis Ministries
- AREA #3**
KVC
- AREA #5**
Cornerstones of Care
- AREA #2**
Saint Francis Ministries
- AREA #4**
TFI Family Services
- AREA #6**
KVC
- AREA #7**
Saint Francis Ministries
- AREA #8**
TFI Family Services

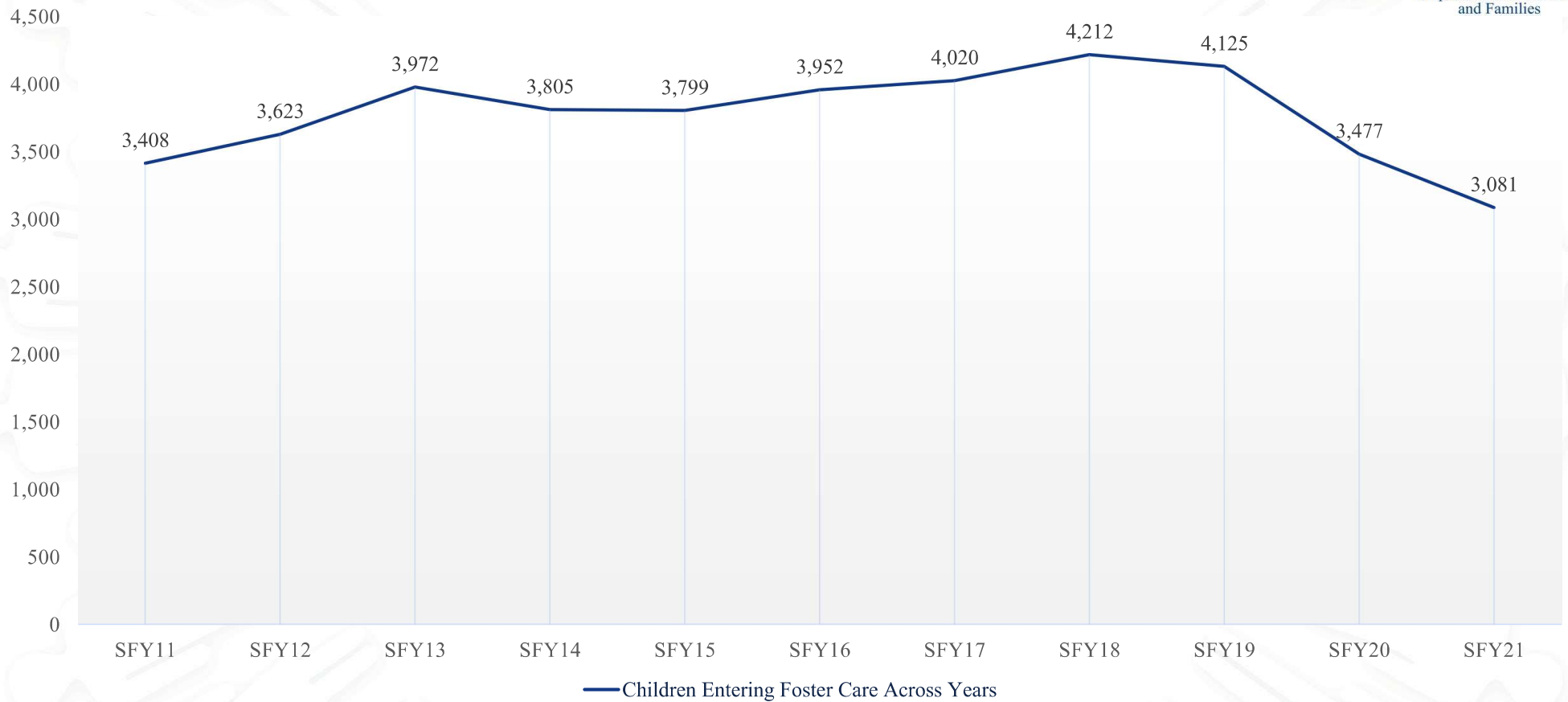
TREND DATA

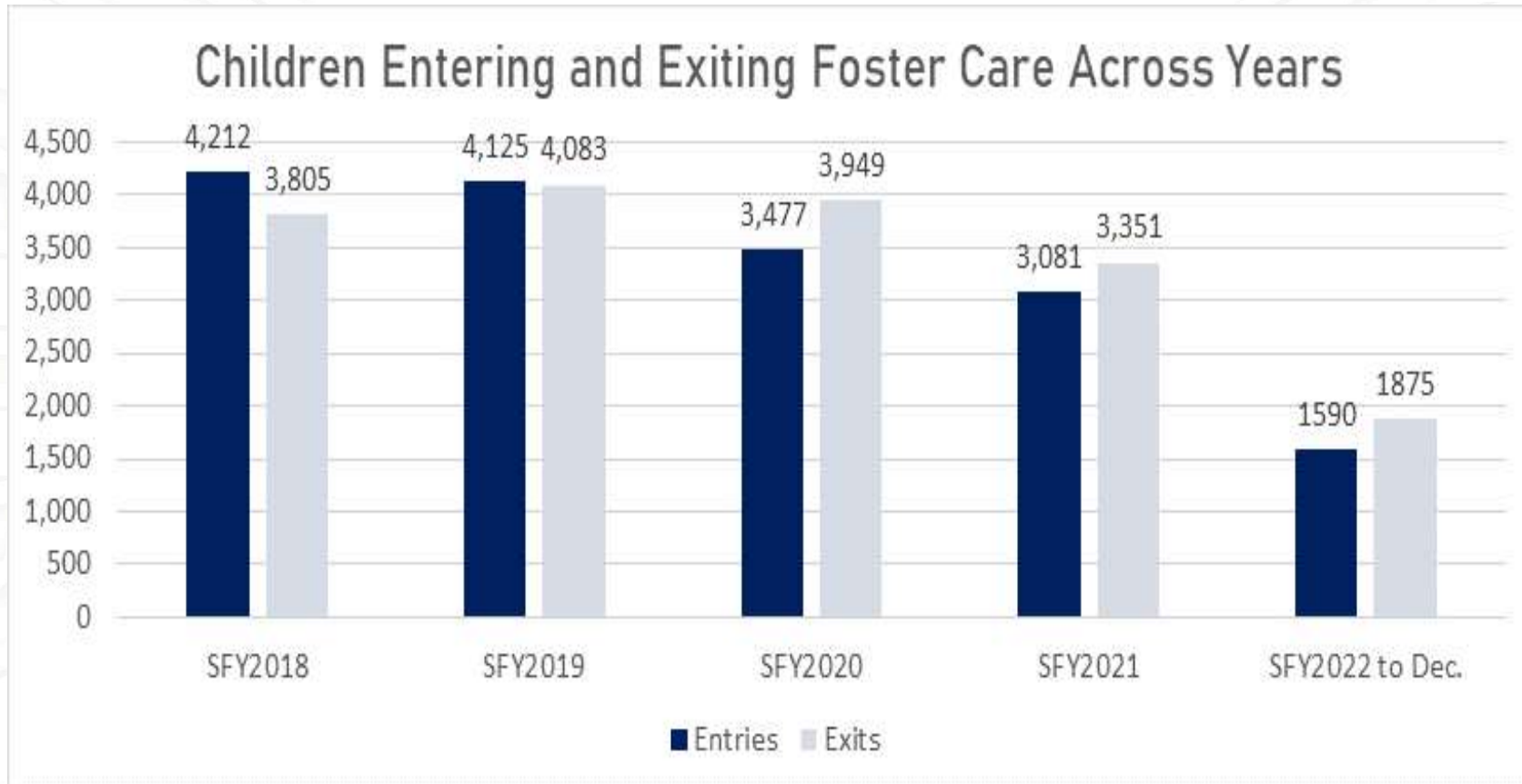
FOSTER CARE

Number of Children In Foster Care



Children Entering Foster Care Across Years





COLLABORATION PATHWAYS

COMMUNITY AND GRANT/ CONTRACT PROVIDERS