

WELCOME STAKEHOLDERS



2024
STAKEHOLDER
MEETING



Meeting Agenda



Aug. 13, 2024
Pittsburg



Welcome – Anita Cooper, Southeast Regional Director

2024 Legislative Session Update – Secretary Laura Howard

Budget Update – Dan Lewien, Deputy Secretary

Program Update – Tanya Keys, Deputy Secretary

Questions/Closing – Secretary Howard

Message from the Secretary



2024
STAKEHOLDER
MEETING



DCF LEGISLATIVE SESSION UPDATE



Secretary Laura Howard



Legislation Enacted by the 2024 Kansas Legislature



SOUL Family

HB 2536

After two years of collaborative effort from the Annie E Casey Foundation (AECF), lived experience partners, and child welfare advocates and professionals across the state, the SOUL Family legal permanency option was introduced and passed by the Kansas Legislature!

Now, young Kansans, ages 16 and older, can chose one or more caregivers to be their SOUL Family through the courts to create a nurturing, lifelong family as they move into adulthood. This permanency option also allows youth to establish this supportive circle of caring adults while potentially keeping legal ties with biological parents and siblings.

This bill passed both chambers almost unanimously. Signed into law April 15.



SOUL Family

SUPPORT • OPPORTUNITY • UNITY • LEGAL RELATIONSHIPS

KORA: CRITICAL INFORMATION SHARING

HB 2628

DCF introduced House Bill 2628 in an effort to increase agency transparency and accountability as well to better align agency responses with the criminal justice system.

HB 2628 amends KSA 38-2212(g)(3) to allow DCF to release certain information in response to a Kansas Open Records Act Request upon the filing of criminal charges alleging that a person caused a child fatality.

The information to be released, in response to an open records request, is dictated by statute as:

- Age and sex of the child
- Date of the fatality
- A summary of any previous reports received involving the child and the findings of such reports.
- Any department recommended services provided to the child.

This bill passed both chambers almost unanimously. Signed into law April 12.

Office of the Child Advocate



SB 115

Established the Office of the Child Advocate as an independent state agency and grants the advocate access to certain files and records of children involved in child welfare proceedings.

Codifies the position of the Child Advocate as the independent head of the Office, appointed by the Governor and confirmed by the Senate.

This bill was signed into law April 22.

Foster Care Student Eligibility to At-Risk Programs



HB 2703

HB 2703 is an Education bill that adds students in the custody of the Secretary for Children and Families to the list of students identified as eligible to receive at-risk programs and services from public schools.

This bill passed both Houses unanimously and was signed into law April 12.

KATHY'S BILL



SB 333

The bill provides that persons with disabilities, as defined by the bill, be given preference for hiring in state government positions, if they meet the qualifications of the position. The bill requires hiring authorities for such positions to offer an interview to persons with disabilities who meet the qualifications of the position.

This bill was signed into law April 24.

FOSTER YOUTH BANK ACCOUNTS –HB 2560

DCF introduced HB 2247 which was inserted into **HB 2560** during conference committee in order to allow Foster Youth, ages 16 or older, to open a bank account without a cosigner. The bill was amended in committee to also include safety deposit boxes.

The ability to open checking and savings accounts without co-signers will not only help them prepare for adulthood but will also help mitigate fraud and potential theft of a young person's money by biological or non-related caregivers.

This bill passed both chambers almost unanimously. Signed into law April 19.

HB 2562 creates the Protect Vulnerable Adults from Financial Exploitation Act and amends the Kansas Uniform Securities Act (KUSA) relating to reporting of instances of suspected financial exploitation, grounds for discipline, and civil and administrative immunity in certain instances. The bill adds broker/dealers and investment advisers to the list of those required to make such reports. Under current law Bank trust officers and other officers of financial institutions are required to make such reports.

The bill was signed into law on April 19.

PROTECTING VULNERABLE ADULTS



HB 2562

Legislation that Failed to Pass



DCF requested introduction and testified on House Bill 2581 which would have removed the statutory mandate to start child support orders for all children adjudicated as a child in need of care.

This was requested in part due to June 2022 guidance from federal partners to discontinue mandatory support orders for all foster care cases, instead assessing the best interest of the child.

This bill was recommended for passage out of committee but did not receive a floor vote.

ALLOWING AGENCY DISCRETION ON CINC CHILD SUPPORT ORDERS



HB 2581

PRE-ADJUDICATED CINC MENTAL HEALTH TREATMENT



HB 2580

DCF requested introduction for and testified on House Bill 2580 in attempt to clarify the agencies authority to access mental, emotional, and behavioral health care screenings and treatment prior to adjudication in a Child in Need of Care (CINC) case.

The bill did not pass out of committee.

INCREASING PUBLIC ASSISTANCE ACCESSIBILITY


HB 2668

DCF requested introduction for House Bill 2668, which would have made several changes to public assistance programs in Kansas:

- Removing the prohibition on Food Assistance advertising
- Removing requirement for a 20-hour work week in order to receive Child Care Subsidy
- Removing associated time penalties for non-cooperation for all assistance programs.

This bill did not receive a hearing.

OFFICE OF EARLY CHILDHOOD



House Sub for House Sub
for SB 96

House Sub. For House Sub. For SB 96 would have transferred certain programs from DCF, KDHE and the Department of Education to the new Office of Early Childhood to have a focal point in government for early childhood/child care services.

The Conference Report was never heard in the Kansas Senate.

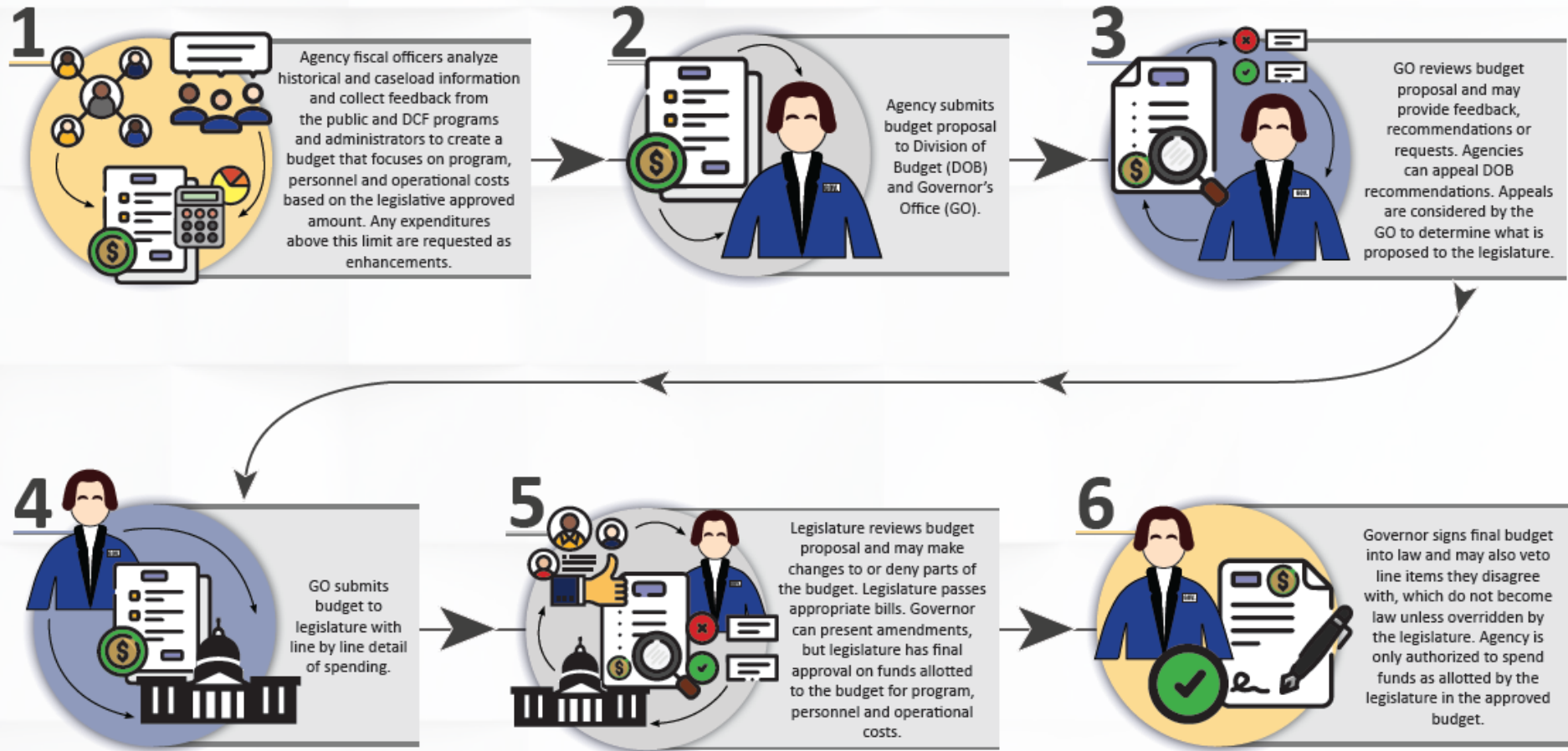
DCF BUDGET UPDATE



DEPUTY SECRETARY DAN LEWIEN



DCF BUDGET CYCLE



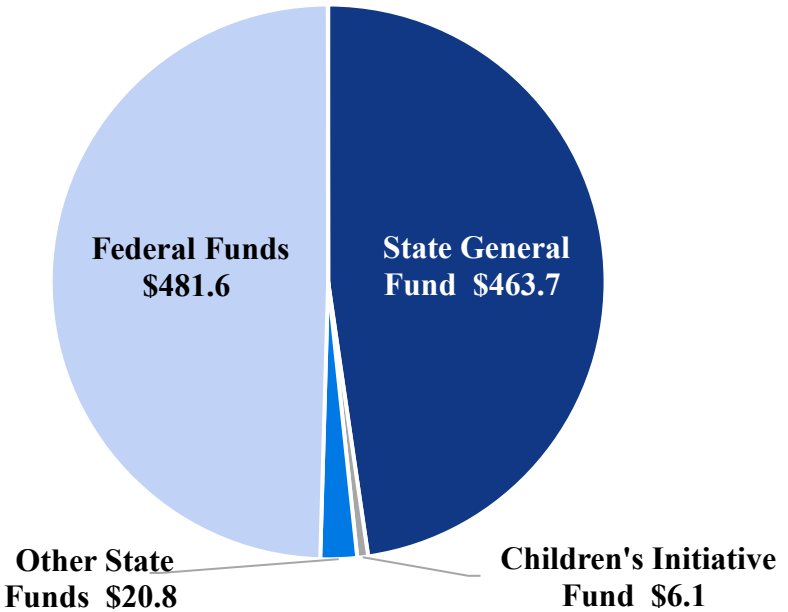
FY 2025 APPROVED BUDGET (MILLIONS)

Total Budget

FY 2025
\$972.3

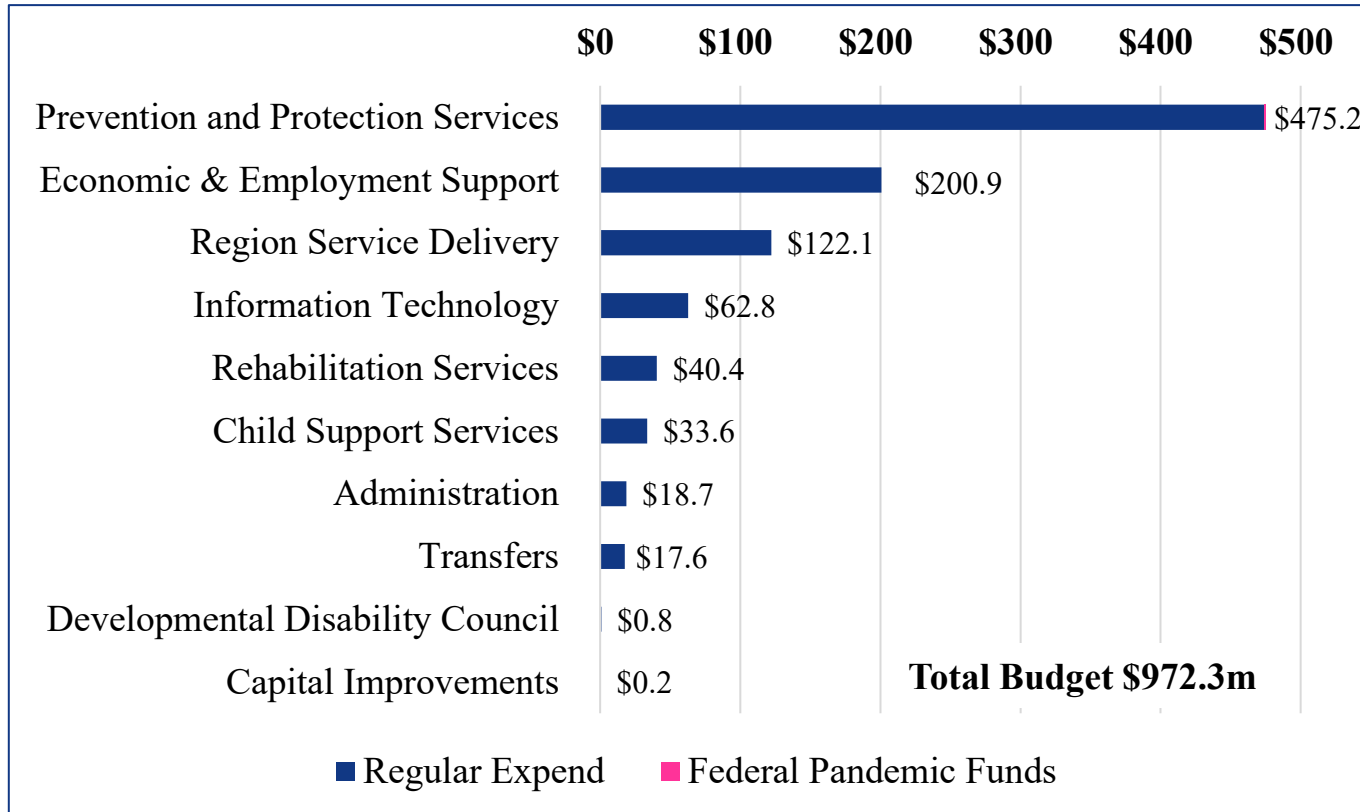
Funding Sources

State General Fund	\$463.7
Children's Initiative Fund	\$6.1
Other State Funds	\$20.8
Federal Funds	\$481.6
Enterprise Funds	\$0.1
Total Funding	\$972.3



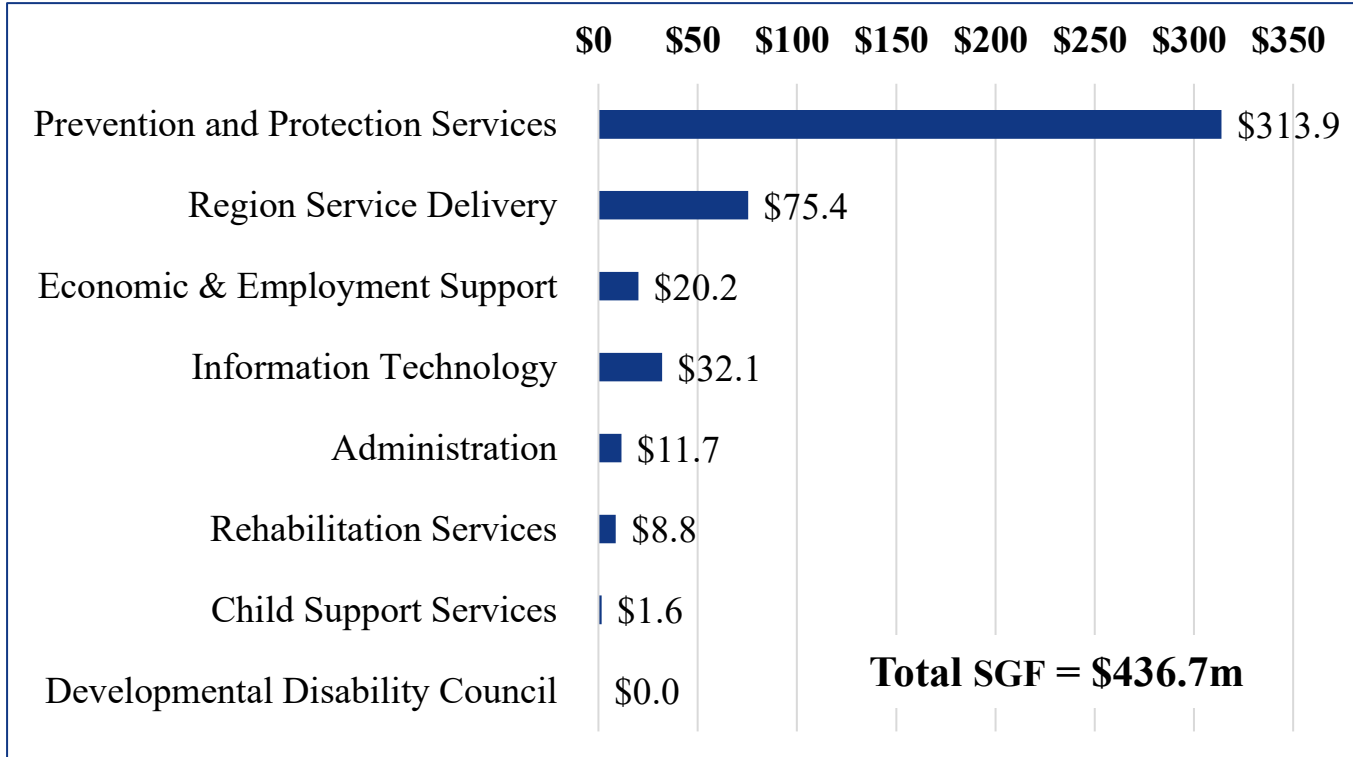
FY 2025 APPROVED BUDGET BY PROGRAM

(MILLIONS)



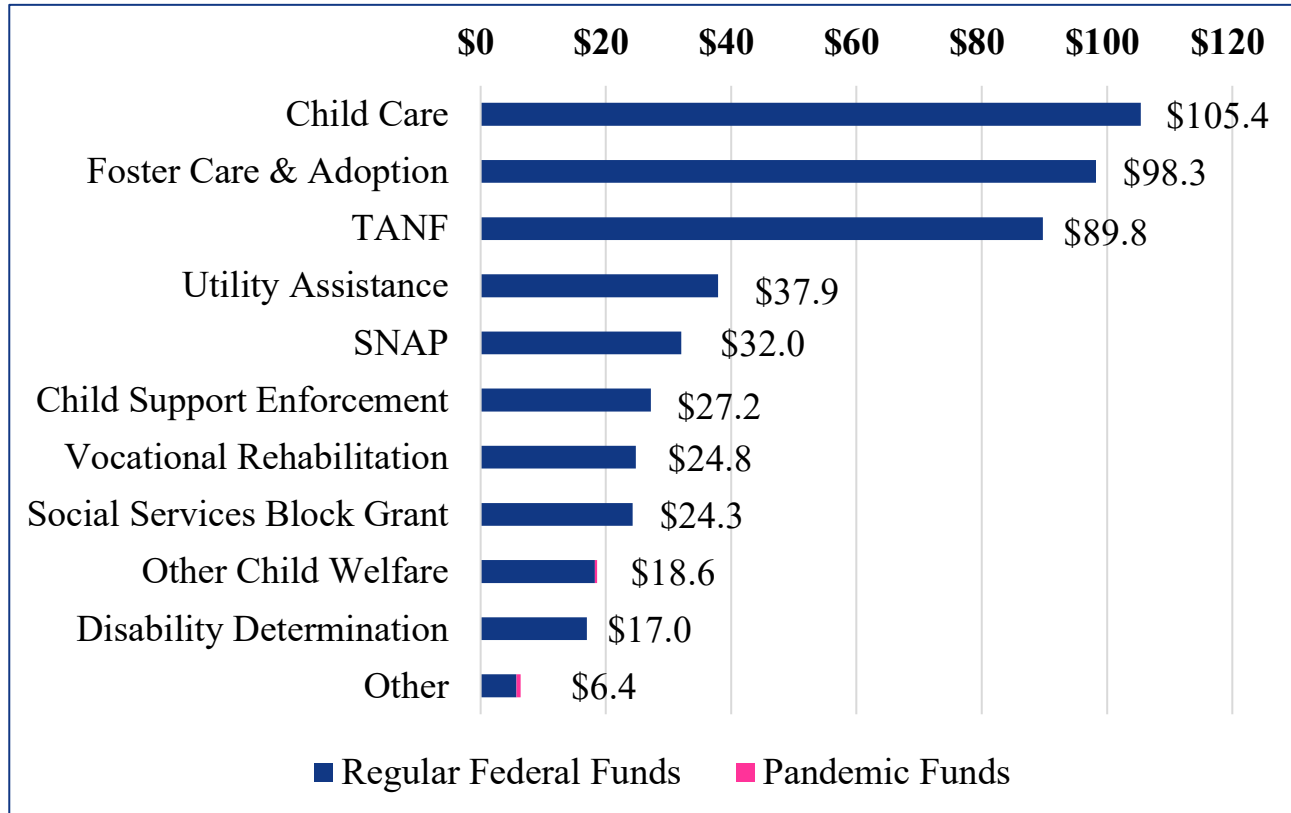
FY 2025 APPROVED SGF BY PROGRAM

(MILLIONS)

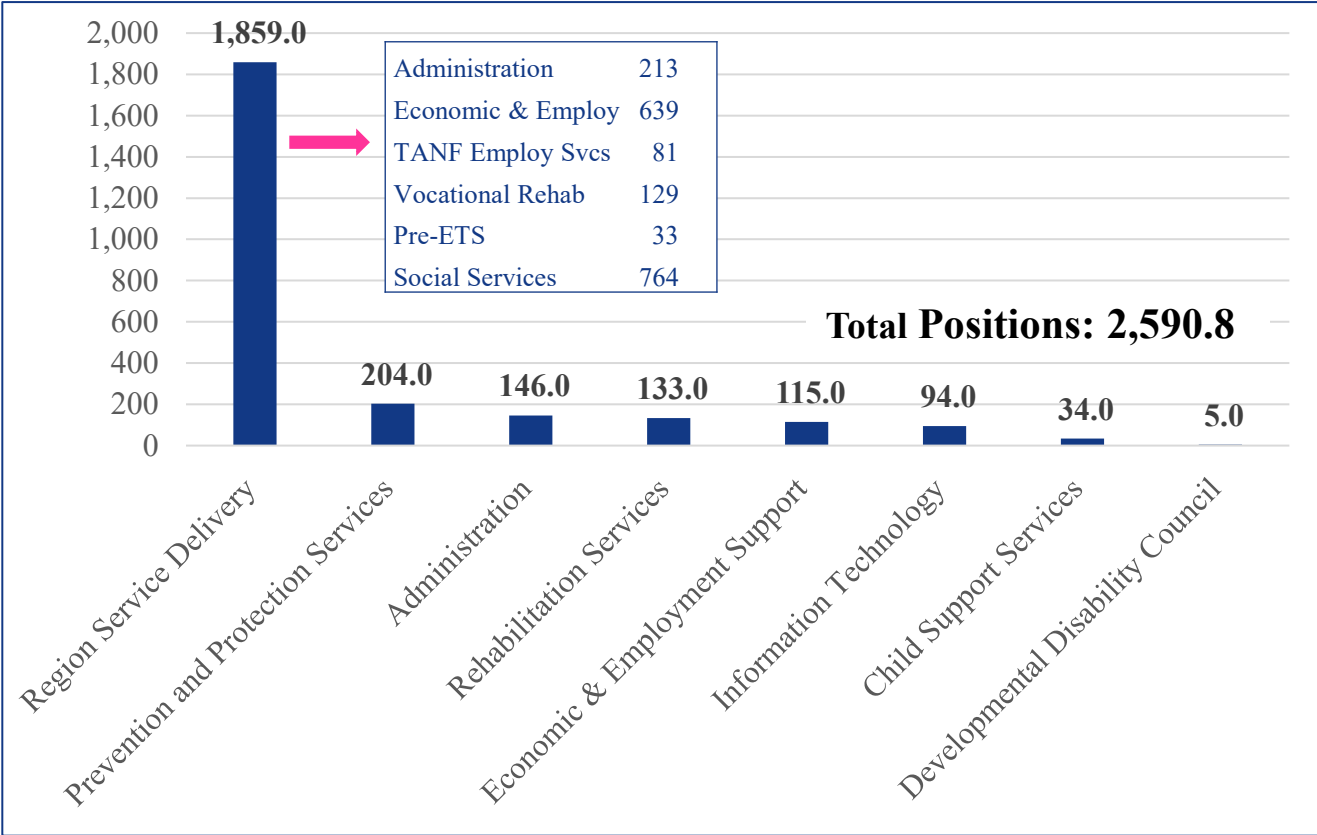


FY 2025 APPROVED FEDERAL FUNDS

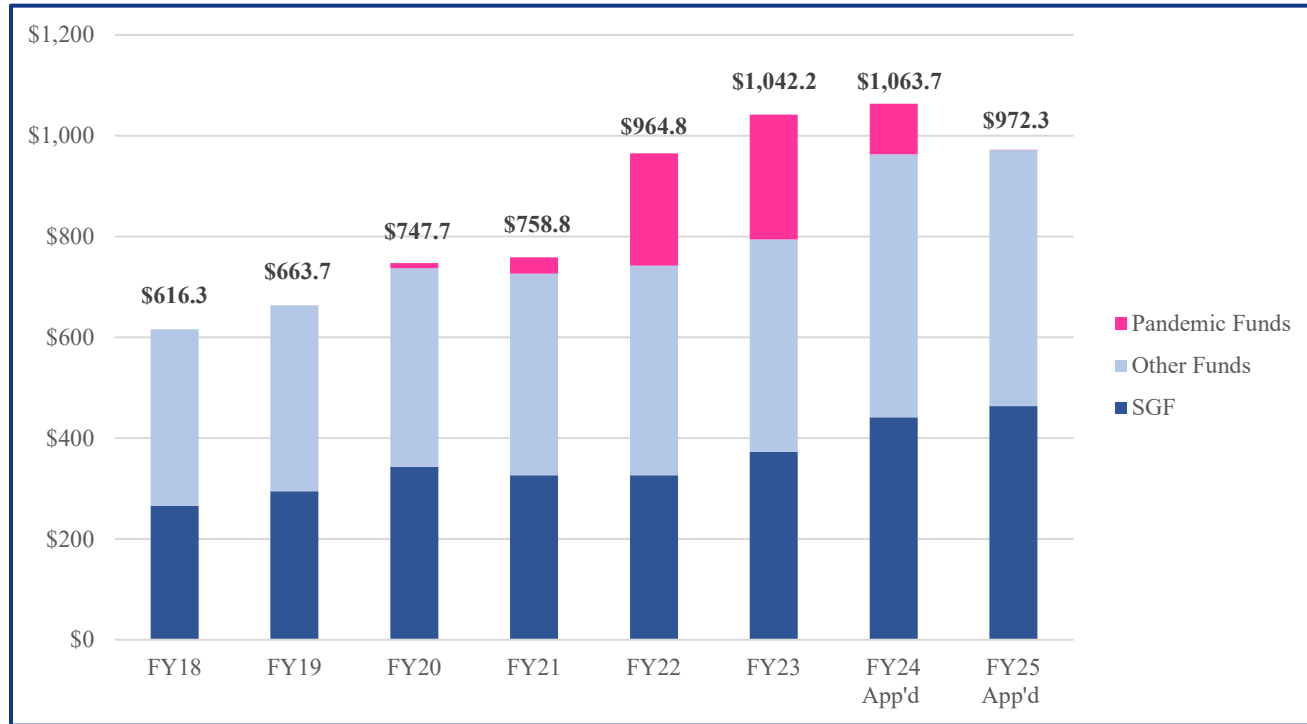
(MILLIONS)



FY 2025 APPROVED POSITIONS



DCF BUDGET FY 2018 - FY 2025



Note: For greater accuracy, unspent pandemic fund obligations were removed in FY20-FY22. Therefore, the total expenditures will not match historical budget data.

FY 2025 ADDITIONS TO THE BASE BUDGET

	All Funds	SGF
Base Budget	\$883.1	\$407.4
Governor's Enhancements	34.3	17.0
Legislative Adjustments	5.1	5.1
Legislation with Fiscal Impacts	0.5	0.5
Consensus Caseload Adjustments	49.4	33.7
Pay Plan	TBD	TBD
Total Adjustments to Base Budget	\$89.3	\$56.3
Total DCF Approved Budget	\$972.3	\$463.7

The total includes non-expense transfers.

GOVERNOR'S DCF ENHANCEMENTS

Item	All Funds	SGF	Explanation
Comprehensive Child Welfare Information System (CCWIS)	\$17,000,000	\$8,500,000	Additional funding for the new Comprehensive Child Welfare Information System (CCWIS). With an estimated \$109 million development cost (50% SGF and 50% Federal Funds), the enhancement added \$17 million each year for 4 years totaling \$68 million (\$34 million SGF). An additional \$41 million is projected to be spent from the DCF base budget and from reappropriated funds over the four-year period.
Family Finding System (GBA)	1,400,000	1,168,300	Provides funding to secure a system to track family data to identify, contact, and engage a child's relatives and kin to build connections and identify potential placements.
Support Family Resource Centers	1,125,000	1,125,000	Continues support for nine existing sites for which one-time federal funding ended September 30, 2024. It provides \$125,000 for each center. Family Resource Centers support families and communities by identifying, accessing, and providing services for families to reduce the likelihood of child abuse and neglect.
Expand Foster Adopt Connect Grants to Wichita	500,000	500,000	Expands Foster Adopt Connect into the Wichita region. Foster Adopt Connect is currently available in two counties in the Kansas City Region and five counties in the Southeast Region of the state. The services will include advocacy for children and parent needs, support/training, service coordination, educational guidance, and behavioral intervention.
Post-Adoption Services to Prevent Disruption and Removal	1,000,000	1,000,000	Provides evidence-based services specifically targeting adopted children who are at risk of removal. An average of 93 post-adoption removals per year have occurred since FY 2015, with 71 percent in the sixth year or later after adoption.

GOVERNOR'S DCF ENHANCEMENTS (continued)

Item	All Funds	SGF	Explanation
Sustain Child Care Program Improvements and Fully Match Federal Funds	\$6,824,727	\$2,619,505	The additional funds would allow recent Child Care Assistance enhancements to continue. The \$2.6 million SGF would match \$4.2 million in federal funds available in FY2025, resulting in a total of \$6.8 million in additional childcare assistance funds. This is one part of \$56.4 million recommended by the Governor for early childhood care and education.
Fund Continuation of the Workforce Registry	1,100,000	-	Continues the maintenance and support for a child care Workforce Registry which was initially developed using federal CCDF Pandemic Relief Funds. The federal pandemic funds are ending. This initiative is funded by the Children's Initiative Fund.
Increase Funds for Vocational Rehabilitation Caseload Assistance	2,675,747	569,934	Funds the rising regular adult caseload and the Pre-Employment Transition Services (Pre-ETS). A total of 15% of all dollars spent in Vocational Rehabilitation must be set aside for Pre-ETS expenditures on youth ages 14 to 21. Additional SGF matching funds are needed to draw down the federal grant to meet this requirement.
Increase Grants for Centers for Independent Living	1,000,000	1,000,000	Provides adequate and stable funding for mandated and core services to individuals with disabilities. Independent Living Centers maximize leadership, empowerment, independence, and productivity of individuals with disabilities, and further their integration and full inclusion into mainstream society. The increase will be divided between the ten CILs and added to the current grants. [Additional funding added by Legislature.]

GOVERNOR'S DCF ENHANCEMENTS (continued)

Item	All Funds	SGF	Explanation
Fund Administrative Operating Expenses	\$1,626,796	\$766,794	Funds administrative increases in the Equifax employment verification contract, postage, administrative hearings, software fees and other IT costs. Funding the increases prevents reductions in employment programs, child care, prevention, and/or other DCF areas.
Substitute SGF for CIF in the Family Preservation Program	-	3,241,062	Of the total \$12 million Family Preservation budget, \$3,241,062 was funded by the Children's Initiative Fund (CIF). This adjustment replaces the CIF with SGF, releasing the CIF to programs for which the funds were originally intended.
SGF Savings from Licensing Changes for Relatives and Kin	-	(3,500,000)	The U.S. Dept. of HHS issued a new regulation that allows states to create licensing standards for relative or kinship placements that differ from existing family foster family home standards. This change allows relative or kinship placements that meet the separate standards to shift from all state funding to federal matching Title IV-E Foster Care funds. It also allows the daily rate to match other licensed home rates. (This is the administrative portion of the SGF savings. SGF placement savings are reflected in the foster care budget.)
Total	34,252,270	16,990,595	

LEGISLATIVE ADDITIONS

Item	All Funds	SGF	Explanation
Toiletry Products for Children in Schools	1,800,000	1,800,000	Supports the well-being and hygiene of students by ensuring access to essential personal care products through schools. Initially added as TANF but changed to SGF on Omnibus Bill.
Increase Grants for Centers for Independent Living	1,300,000	1,300,000	The increase is in addition to the \$1.0 million increase provided in the Governor's Budget Recommendation.
Family Preservation	1,000,000	1,000,000	Expands Family Preservation funding for DCCCA. DCCCA currently receives a \$2.0 million grant for the Kansas City Region and a \$2.0 million grant for the Wichita Region.
KanCoach	400,000	400,000	Develops and strengthens supervisory capacity and skills to promote quality frontline practice and improve outcomes in child welfare.
Core Community <i>(one-time funding)</i>	350,000	350,000	An anti-poverty, faith-based program tailored to individual needs that assists those in poverty to resolve their barriers with community support.
Help Youth Stay on Track in School <i>(one time funding)</i>	250,000	250,000	Helps Kansas youth 15 and older track placement history and secure records to ease communication between schools and providers and deliver interventions for risk factors that create barriers to educational success. An RFP will be issued.
Total	\$5,100,000	\$5,100,000	

LEGISLATION WITH A FISCAL IMPACT

Item	All Funds	SGF	Explanation
HB 2536 Establish the SOUL Program	\$464,687	\$464,687	Establishes a legal permanency option for youth age 16 and older. This option addresses the needs of older foster youth who would benefit from establishing legal relationships with supportive adults in their lives, while still maintaining legal relationships with birth parents and siblings.
HB 2484 Social Work Licensing Compact	-	-	<p>The new compact expands the mobility of licensees, promotes continued care to clients, allows additional telehealth practice in Kansas, and allows licensees with a multistate license to provide telehealth practice in other compact member states.</p> <ul style="list-style-type: none"> ➤ The estimated cost of \$9,800 all funds and \$6,417 SGF will be covered in the licensing budget.
H Sub for SB 291 Cybersecurity	-	-	<p>On July 1, 2027, cybersecurity efforts would fall under the oversight of the Chief Information Technology Officer and the Chief Information Security Officer in each branch of state government.</p> <ul style="list-style-type: none"> ➤ Any DCF impact would occur in future years.
Total	\$464,687	\$464,687	

CASELOAD ADDITIONS

Additions from the Fall 2023 and Spring 2024 consensus caseload meetings:

Item	All Funds	SGF	Explanation
TANF Caseload	\$300,000	\$0	Increase expected relative to prior estimates. Part from catching-up of applications and part from the slowing of the long-term decline in the caseload.
Foster Care Caseload	49,133,600	33,733,600	<p>Several factors contributed to the increase:</p> <ul style="list-style-type: none"> ▪ Case management providers increased \$29.5 million mainly due to lower case manager per child staffing ratios and inflationary costs. ▪ Case management provider payments shifted from retrospective to prospective payments costing \$10.1 million. ▪ Placement costs increased \$4.2 million due to increases in the acuity of care. ▪ Child placing agency costs rose \$3.3 million also because of higher acuity. ▪ The relative licensing policy impact was \$3.0 million.
Total	\$49,433,600	\$33,733,600	

HOW TO PARTICIPATE & PROVIDE INPUT



The Kansas Department for Children and Families is accepting suggestions and comments as we move forward through the 2025/2026 budget process.

Please send any questions or suggestions to:

DCF.Budget@ks.gov

By Aug. 16, 2024

PROGRAM UPDATES



DEPUTY SECRETARY TANYA KEYS



2024
STAKEHOLDER
MEETING

Child Support Services

Launched an online application in April for those seeking to establish or modify a paternity and/or child support order. As of Aug. 6:

- 702 applications submitted
- 50% completed in less than an hour
- 98% of applicants were female
- 52% percent were between 18 and 30 years of age

National Child Support Survey

- Developing an education campaign for stakeholders and customers to grow understanding of child support program offerings.
- Focus on whole family.

Rehabilitation Services

- Completing the RFP process for selection of a new vendor for a modern/enhanced Management Information Services system.
- Aspire to have a system with multiple outward facing portals for ease of client, partner, and stakeholder use.
- Completed the combined Workforce Innovation and Opportunity Act (WIOA) state plan alongside Kansas Department of Commerce and Kansas Adult Education
- Plan lays out the 3-year cycle and plans for all core agency partners in the Workforce Investment and Opportunity Act.

Economic and Employment Services

Summer EBT Program launched this summer

- New program to help families buy food for school-aged children during the summer months
- \$120 total per eligible child
 - Children aged 7-17 years old who receive Food Assistance, TANF, and/or Foster Care benefits during the school year. OR qualify for the National School Lunch or School Breakfast Program for free or reduced-price school meals.
- Benefits automatically issued to **117,353** eligible children in July
 - Application period for families who believe they qualify but did not receive benefits, Aug. 12 to Sept. 11, 2024
- Virtual Call Center has processed 1,839 calls
 - Average handle time per call 4 minutes, 39 seconds
 - Hold time average 3 minutes, 48 seconds



Learn more

LIEAP Automation (Low Income Energy Assistance Program)

Engaging new technologies to improve efficiencies around LIEAP application processing.

- Online LIEAP applications are processed automatically when the agency has the needed verified information for eligibility.
- Updated LIEAP income policies to allow verified SNAP income already known to DCF to be used when processing LIEAP applications.

Program Year	2024	2023
Applications Processed to Date (Including Auto Issuance)	45,159	22,619
Remaining Pending Applications to Process	1,714	25,087
Applications Processed as % of Total Received	96.3%	47.4%
Total Applications Received (Including Auto Issuance)	46,873	47,706

Child and Family Wellbeing: 4 Questions

The 4 Questions help guide practitioners and those involved in the child and family wellbeing work towards least disruptive solution for the child.

- Northwest Region presented to judges and court partners throughout 32 counties in northwest Kansas.
- Kansas City region provided four Lunch and Learn meetings.



Before removing a child from a home, have you asked:



1. What can we do to remove the **danger** instead of the child?



3. Can the caregiver and the child go **live with a relative or family friend**?



2. Can someone the child or family knows **move into the home** to remove the danger?



4. Could the child **move temporarily** to live with a relative or family friend?

Questions sourced from: *4 Questions, 7 Judges*, an Iowa-based Judicial Pilot Program. Read more in: Tabor, M., 2020. Transformation in Child Welfare. *The Iowa Lawyer*, 80 N5(June 2020), pp.10-12.

FAMILY FIRST PREVENTION SERVICES

OUTCOMES: October 1, 2019 to June 30, 2024



**FAMILY FIRST
REFERRALS
5,885 Referrals**

90%

of target children and youth who have reached 12 months from the time-of-service referral remained together at home without need for foster care

74%

of families referred to Family First were engaged timely in services (within 2 days)

49%

of cases serviced and closed had successfully completed the referred service

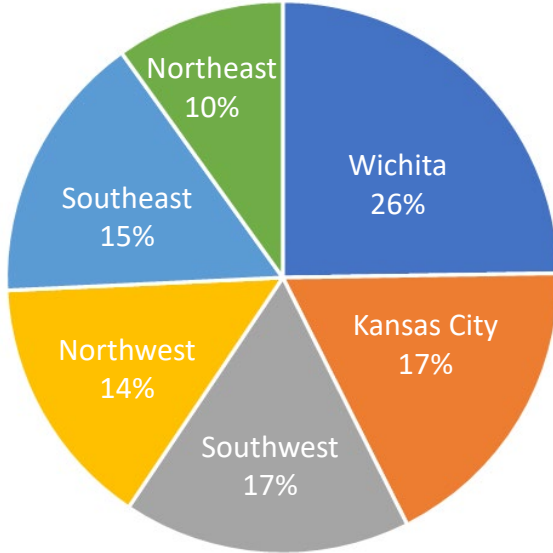
5%

of target children and youth served have been placed in foster care during an open Family First case

FAMILY FIRST PREVENTION SERVICES

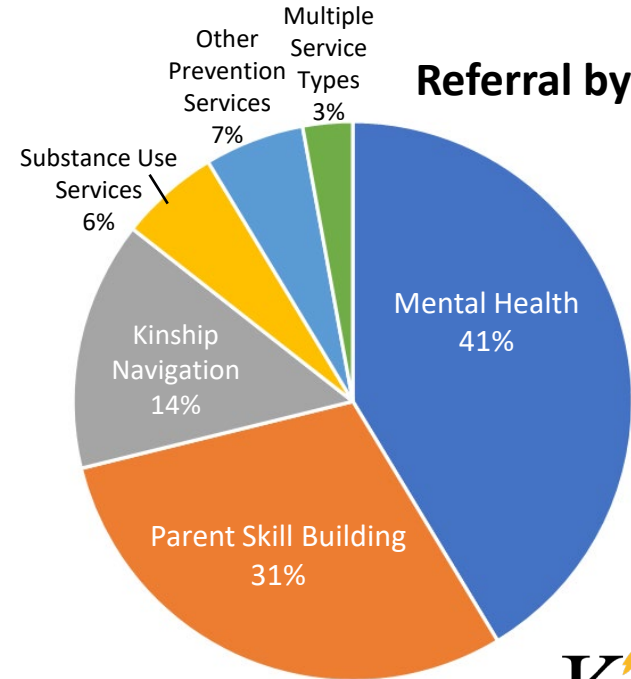
OUTCOMES: OCTOBER 1, 2019 – June 30, 2024

Referral by Region



**FAMILY FIRST
REFERRALS
5,885 Referrals**

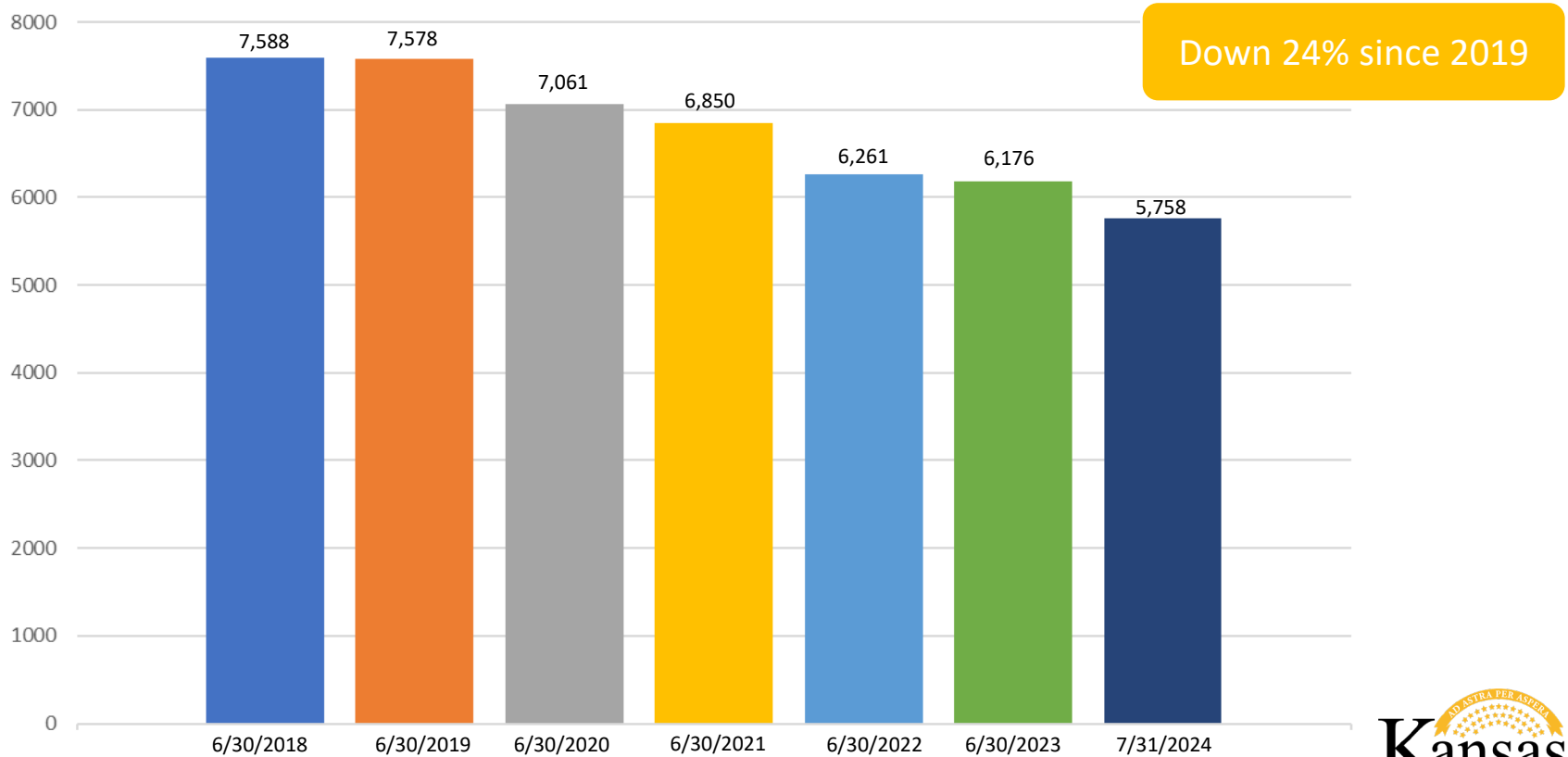
Referral by Service



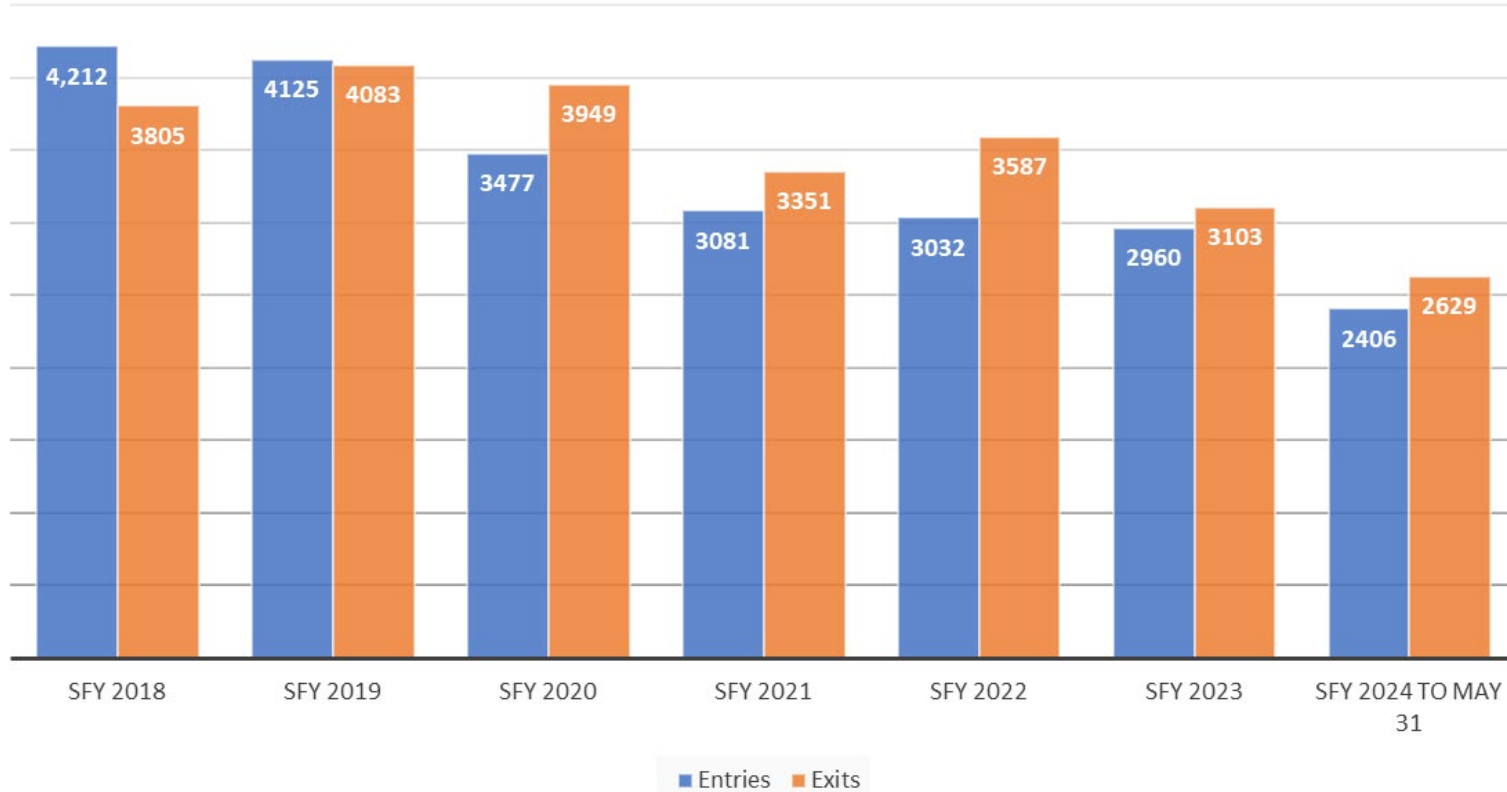
FAMILY PRESERVATION SERVICES

- **Family Preservation Services (FPS)** new contracts awarded and began July 1, 2024.
- Available to families in all 105 counties.
- Contractors will remain the same as last contract:
 - Kansas City and Wichita Regions – DCCCA
 - Northeast and Southeast Regions – Cornerstones of Care
 - Northwest and Southwest Regions - TFI
- New features in contracts:
 - Eliminated Tier 1 and Tier 2 levels of services – Allows FPS provider to work in collaboration with the family to determine the level of services needed.

Number of Children in Foster Care



Children Entering and Existing Foster Care



FOSTER CARE CASE MANAGEMENT CONTRACTS

- **Case Management Provider (CMP)** new contracts awarded and began July 1, 2024.
- Contractors will remain the same, with one exception.
 - **Area 7 (Sedgwick County): EmberHope**
 - Areas 1 and 2: St. Francis Ministries
 - Areas 3 and 6: KVC
 - Area 4 and 8: TFI
 - Area 5: Cornerstones of Care
- The new contracts adjust foster care caseload standards for case managers:
 - 12-15 children in foster care or kinship care, and their families; and
 - 8 children in treatment foster care, and their families.
 - When workers manage a blend of case types, caseloads should be weighted and adjusted accordingly.
 - Caseloads may be higher when organizations are faced with temporary staff vacancies.
 - New personnel should not carry independent caseloads prior to the completion of training.

THERAPEUTIC FAMILY FOSTER HOMES

- **Therapeutic Family Foster Homes (TFFH)** capacity building contracts awarded and began March 1, 2024.
- Seven agencies awarded \$4.7 million to build capacity through innovative approaches to significantly increase the number of homes available and provide needed training and supportive services.
 - Cornerstones of Care
 - DCCCA
 - Eckerd Connects
 - EmberHope YouthVille
 - FosterAdoptConnect
 - KVC
 - Pressley Ridge
- Innovative mix of service delivery options will include specific recruitment strategies and increased wraparound supports to resource families, biological families and youth.
 - Some grants include collaboration with agencies who operate similar programs or support youth requiring a therapeutic level of care

Goal: Civic Engagement Examine why more than 20 percent of the children in foster care in the state of Kansas are from Sedgwick County.

Process: Approximately 100 community members, partners, government officials and business leaders divided into small groups to discuss eight critical data points concerning the foster care experience.

Data points:

- Children removed from their homes into foster care
- primary reasons for removal
- foster care demographics by race
- transitioning youth statistics
- graduation rates
- adverse childhood experiences
- child poverty in single and two-parent households
- food insecurity

What's next: Continue conversation in SG County to involve more stakeholders in the discussion and search for solutions.

SG County Data Walk



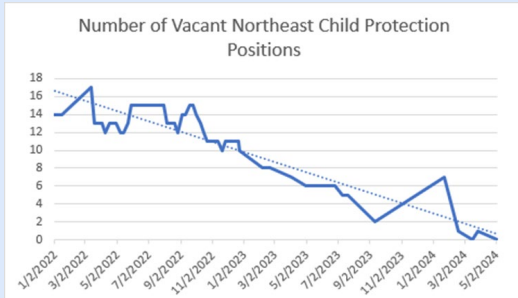
Kansas Leadership Center
Kansas Health Institute
Sedgwick County Government

Goal: In Northeast and Northwest regions, brings together multidisciplinary teams to engage in a dynamic learning process that cultivates a healthy, equitable, sustainable workforce.

Kansas: 41 Kansas counties focusing on the Northwest and Northeast regions of the state. Including cities of Colby, Hays, Salina, Manhattan, Hiawatha and Topeka.

Results:

- Northeast region has seen a decreasing number of child protection vacancies by focusing on the pillars *Protection from Harm* and *Work-Life Harmony*.
- Northwest region has built capacity through a partnership with Fort Hays State University. This has increased collaboration between DCF and FHSU as well as help students graduate with a better understanding of the child and family wellbeing work.



National Child Welfare Workforce Institute

Breakthrough Series Collaborative



Southeast: Working Together to Meet Family Needs

Facilitating and empowering communities in southeast to support families through shared learning and connections, utilizing technology, with the goal of getting concrete and community supports and services to families quickly, often the same day without the need for a DCF referral when abuse/neglect concerns are not present.

In this forum:

- **We learn together** through a virtual monthly meetings.
- **We support families** through a continuous virtual chat that allows us to quickly identify resources. Agencies can post family needs including financial or behavioral supports on the Team chat, *without identifying information*.
- **We support each other**. Agencies Working Together is a great way for new staff and experienced staff to learn about community resources and offer support to each other
- **We stay connected**, we have quick access to each other and hear from those with expertise in the areas that we are not as familiar with. There are so many resources in our communities and new ones being added daily.

Adult Protective Services engaging with the newly organized multi disciplinary team - Partnering with Kansas Judicial Districts, Law Enforcement, Kansas Attorney General's Office and various community partners.

Children's Behavioral Interventionist : Added to the Medicaid State Plan for coverage in Kansas. In home support for families with children's behavior health needs. Services include neuro-developmental activities for children and families.

School partnerships continue with school districts in Emporia, Hutchinson and Wichita.

- School liaison specialists work to connect parents and students with local concrete and supportive resources.

Additional Collaborations



Questions?

Today's presentation is available on-line



www.dcf.ks.gov/Agency/Testimony/Pages/default.aspx

THANK YOU FOR JOINING US!

